

Model	3.5KLCT for F400/410	Volt/Hz	Date of Modification	Serial Number
Modified Article	Parts Catalog			
Reason for Modification	Parts catalog correction			

Please correct your parts catalog as follows:

Incorrect P/N	Correct P/N	Description	Q'ty Used	Parts Catalog	
				Index No.	Page
AX210038	AX210037	Magnetic Clutch - 5kgf	1	14	7
		Magnetic Clutch			

S. Hamano, Assistant General Manager
Technical Support Department

MODEL NAME	V/Hz	DESTINATION	JAPN PRODUCTION		REI PRODUCTION
			CODE	SERIAL NUMBER	SERIAL NUMBER
NRG CLCT55	120/60	U.S.A. , Canada etc.	A380 - 10		
Savin LCT3.5K	120/60	U.S.A.	A380 - 15		
Ricoh RT31	120/60	U.S.A.	A380 - 17		
NRG CLCT55	230/50	Europe etc.	A380 - 22		
Infotec LCT5	230/50	Europe	A380 - 26		
Ricoh RT31	230/50	Europe, Asia etc.	A380 - 27		

Model	3.5K LCT for F400/F410	Volt/Hz	Date of Modification	Serial Number
Modified Article	LCT Tray			
Reason for Modification	Due to vender change			

Due to vender change, the LCT tray has been changed.

Old P/N	New P/N	Description	Q'ty Used	Inter-change-ability	Parts Catalog	
					Index No.	Page
A3801781	A3801785	LCT Tray	1 → 1	O/O	1	11

S. Hamano, Assistant General Manager
 Technical Support Department

MODEL NAME	V/Hz	DESTINATION	JAPAN PRODUCTION		REI PRODUCTION
			CODE	SERIAL NUMBER	SERIAL NUMBER
NRG CLCT55	120/60	U.S.A. , Canada etc.	A380 - 10		
Savin LCT3.5K	120/60	U.S.A.	A380 - 15		
Ricoh RT31	120/60	U.S.A.	A380 - 17		
NRG CLCT55	230/50	Europe etc.	A380 - 22		
Infotec LCT5	230/50	Europe	A380 - 26		
Ricoh RT31	230/50	Europe, Asia etc.	A380 - 27		

Model	3.5K LCT for F400/F410	Volt/Hz	Date of Modification	Serial Number
Modified Article	Parts Catalog			
Reason for Modification	Parts Catalog Correction			

Please delete the following parts from the parts catalog.

P/N	Description	Q'ty Used	Inter-changeability	Parts Catalog	
				Index No.	Page
06220100E	Spring Pin - 2 x 10mm	1 → 1	—	101	7

S. Hamano, Assistant General Manager
 Technical Support Department

MODEL NAME	V/Hz	DESTINATION	JAPN PRODUCTION		REI PRODUCTION	
			CODE	SERIAL NUMBER	CODE	SERIAL NUMBER
NRG CLCT55	120/60	U.S.A. , Canada etc.	A380 - 10		A380 - 10	
Savin LCT3.5K	120/60	U.S.A.	A380 - 15		A380 - 15	
Ricoh RT31	120/60	U.S.A.	A380 - 17		A380 - 17	
NRG CLCT55	230/50	Europe etc.	A380 - 22			
Infotec LCT5	230/50	Europe	A380 - 26			
Ricoh RT31	230/50	Europe, Asia etc.	A380 - 27			

Model	3.5K LCT for F400/410	Volt/Hz	Date of Modification	Serial Number
Modified Article	Parts Catalog			
Reason for Modification	Parts catalog correction			

Please correct your parts catalog as follows:

Incorrect P/N	Correct P/N	Description	Q'ty Used	Parts Catalog	
				Index No.	Page
A3801393	A3801293	Actuator	1	40	9

S. Hamano, Assistant General Manager
Technical Support Department

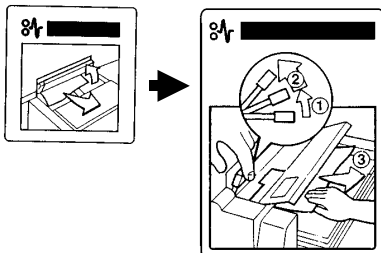
MODEL NAME	V/Hz	DESTINATION	JAPAN PRODUCTION		REI PRODUCTION	
			CODE	SERIAL NUMBER	CODE	SERIAL NUMBER
NRG CLCT55	120/60	U.S.A. , Canada etc.	A380 - 10		A380 - 10	
Savin LCT3.5K	120/60	U.S.A.	A380 - 15		A380 - 15	
Ricoh RT31	120/60	U.S.A.	A380 - 17		A380 - 17	
NRG CLCT55	230/50	Europe etc.	A380 - 22		A380 - 22	
Infotec LCT5	230/50	Europe	A380 - 26		A380 - 26	
Ricoh RT31	230/50	Europe, Asia etc.	A380 - 27		A380 - 27	

Model	3.5K LCT for F400 / 410 / 420	Volt/Hz	Date of Modification	Serial Number
Modified Article	Decals			
Reason for Modification	To improve operation			

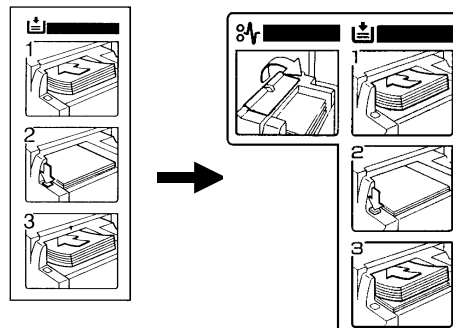
To improve operation (jam removal at 3.5K LCT) the decals have been modified.

Old P/N	New P/N	Description	Q'ty Used	Inter-changeability	Parts Catalog	
					Index No.	Page
A3801132	A3801182	Decal - Misfeed Removal (RICOH)	1 → 1	X/O	17	5
A3801134	A3801184	Decal - Misfeed Removal (Gestetner)			43	9
A3801136	A3801186	Decal - Misfeed Removal (Infotec)			2	15
A3801138	A3801188	Decal - Misfeed Removal (SAVIN)				
A3801131	A3801181	Decal - Paper Setting (RICOH)	1 → 1	X/O	16	5
A3801133	A3801183	Decal - Paper Setting (Gestetner)				
A3801135	A3801185	Decal - Paper Setting (Infotec)			1	15
A3801137	A3801187	Decal - Paper Setting (SAVIN)				

1. Decal - Misfeed Removal



2. Decal - Paper Setting



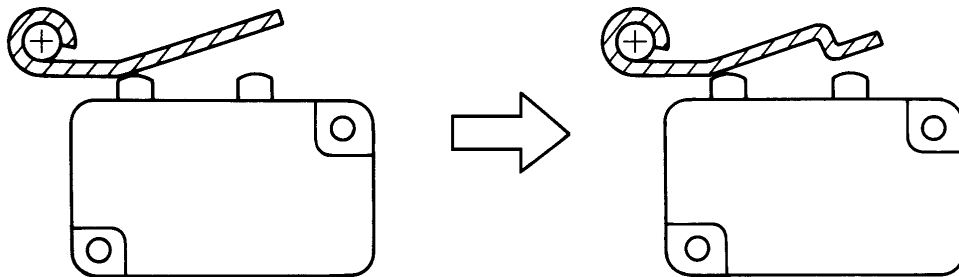
S. Hamano, Assistant General Manager
 Technical Support Department

MODEL NAME	V/Hz	DESTINATION	JAPAN PRODUCTION		REI PRODUCTION	
			CODE	SERIAL NUMBER	CODE	SERIAL NUMBER
NRG CLCT55	120/60	U.S.A. , Canada etc.	A380 - 10	Service Parts only	A380 - 10	
Savin LCT3.5K	120/60	U.S.A.	A380 - 15	Service Parts only	A380 - 15	
Ricoh RT31	120/60	U.S.A.	A380 - 17	Service Parts only	A380 - 17	
NRG CLCT55	230/50	Europe etc.	A380 - 22	Service Parts only	A380 - 22	
Infotec LCT5	230/50	Europe	A380 - 26	Service Parts only	A380 - 26	
Ricoh RT31	230/50	Europe, Asia etc.	A380 - 27	Service Parts only	A380 - 27	

Model	3.5K LCT for F400 / 410 / 420	Volt/Hz	Date of Modification	Serial Number
Modified Article	Micro Switch Plate / Pressure Spring			
Reason for Modification	To improve the microswitch detection			

Old P/N	New P/N	Description	Q'ty Used	Inter-change-ability	Parts Catalog	
					Index No.	Page
A3801297	A3801299	Pressure Spring	1 → 1	X/O	39	9
A3801358	A3801359	Micro Switch Plate	1 → 1	X/O	11	9

To improve the microswitch detection, the shape of the microswitch plate has been changed. Also, the pressure of the spring has been increased from 2000gf mm to 2400gf mm. For details, please refer to RTB No. 026.



Old

New

S. Hamano, Assistant General Manager
 Technical Support Department

MODEL NAME	V/Hz	DESTINATION	JAPN PRODUCTION		REI PRODUCTION	
			CODE	SERIAL NUMBER	CODE	SERIAL NUMBER
NRG CLCT55	120/60	U.S.A. , Canada etc.	A380 - 10	Service Parts only	A380 - 10	
Savin LCT3.5K	120/60	U.S.A.	A380 - 15	Service Parts only	A380 - 15	
Ricoh RT31	120/60	U.S.A.	A380 - 17	Service Parts only	A380 - 17	
NRG CLCT55	230/50	Europe etc.	A380 - 22	Service Parts only	A380 - 22	
Infotec LCT5	230/50	Europe	A380 - 26	Service Parts only	A380 - 26	
Ricoh RT31	230/50	Europe, Asia etc.	A380 - 27	Service Parts only	A380 - 27	

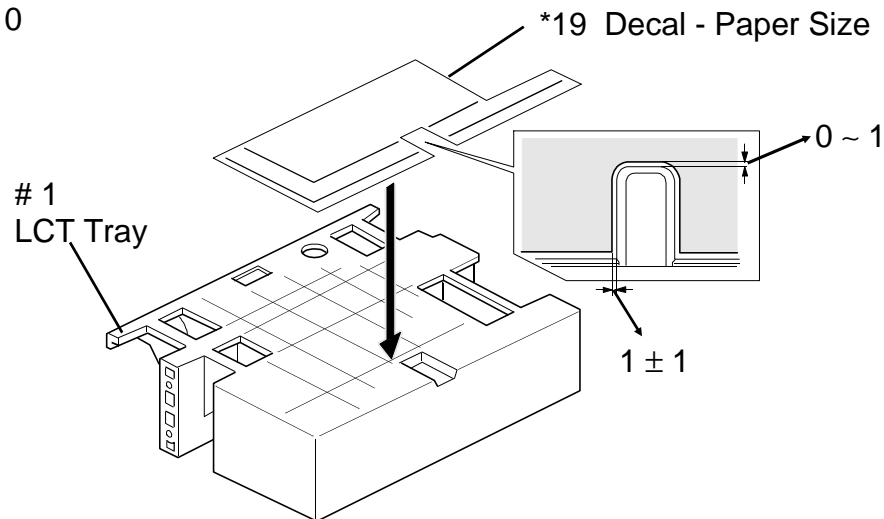
Model	3.5K LCT for F400 / 410 / 420	Volt/Hz	Date of Modification	Serial Number
Modified Article	Decals - Paper Size			
Reason for Modification	As per factory request			

New P/N	Description	Q'ty Used	Parts Catalog	
			Index No.	Page
A3801141	Decal - Paper Size	0 → 1	* 19	11

* New Index

As per a factory request, a paper size decal has been stuck on the LCT tray instead of by printing. When replacing the LCT tray, please stick the decal on it. The part number of the LCT tray is not changed.

Page 10



S. Hamano, Assistant General Manager
 Technical Support Department

MODEL NAME	V/Hz	DESTINATION	JAPAN PRODUCTION		REI PRODUCTION	
			CODE	SERIAL NUMBER	CODE	SERIAL NUMBER
NRG CLCT55	120/60	U.S.A. , Canada etc.	A380 - 10	Service Parts only	A380 - 10	
Savin LCT3.5K	120/60	U.S.A.	A380 - 15	Service Parts only	A380 - 15	
Ricoh RT31	120/60	U.S.A.	A380 - 17	Service Parts only	A380 - 17	
NRG CLCT55	230/50	Europe etc.	A380 - 22	Service Parts only	A380 - 22	
Infotec LCT5	230/50	Europe	A380 - 26	Service Parts only	A380 - 26	
Ricoh RT31	230/50	Europe, Asia etc.	A380 - 27	Service Parts only	A380 - 27	

Model	3.5K LCT for F400/ F410	Volt/Hz	Date of Modification	Serial Number
Modified Article	Parts Catalog			
Reason for Modification	Parts Catalog Correction			

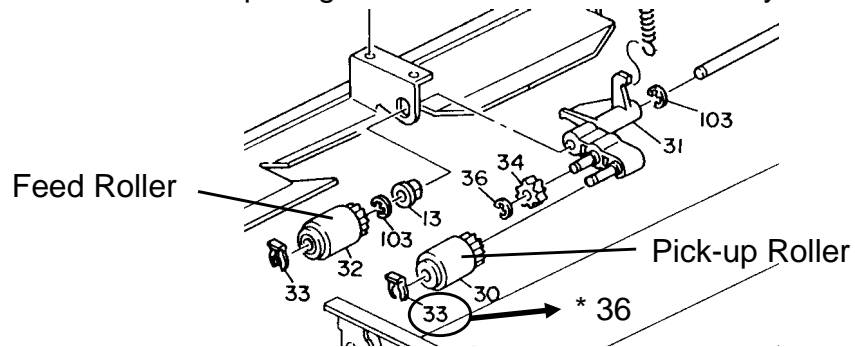
1. Index numbers for the paper feed and pick-up rollers are reversed. Please correct them as follows:

P/N	Description	Parts Catalog		
		Index No.		Page
		Incorrect	Correct	
AF031021	Paper Feed Roller	30	32	7
AF030021	Pick-up Roller	32	30	7

Old P/N	New P/N	Description	Q'ty Used	Parts Catalog	
				Index No.	Page
54472681		Snap Ring	2 → 1	33	7
	52152621	Snap Ring - M6	0 → 1	* 36	7

* New index No.

NOTE: The Snap Ring Part No. for the feed roller stays the same.



S. Hamano, Assistant General Manager
 Technical Support Department

MODEL NAME	V/Hz	DESTINATION	JAPN PRODUCTION		REI PRODUCTION	
			CODE	SERIAL NUMBER	CODE	SERIAL NUMBER
NRG CLCT55	120/60	U.S.A. , Canada etc.	A380 - 10		A380 - 10	
Savin LCT3.5K	120/60	U.S.A.	A380 - 15		A380 - 15	
Ricoh RT31	120/60	U.S.A.	A380 - 17		A380 - 17	
NRG CLCT55	230/50	Europe etc.	A380 - 22		A380 - 22	
Infotec LCT5	230/50	Europe	A380 - 26		A380 - 26	
Ricoh RT31	230/50	Europe, Asia etc.	A380 - 27		A380 - 27	

Model	LCT for F400 / 410 / 420	Volt/Hz	Date of Modification	Serial Number
Modified Article				
Reason for Modification	Part Standardization			

For part standardization, the guide plate has been changed.

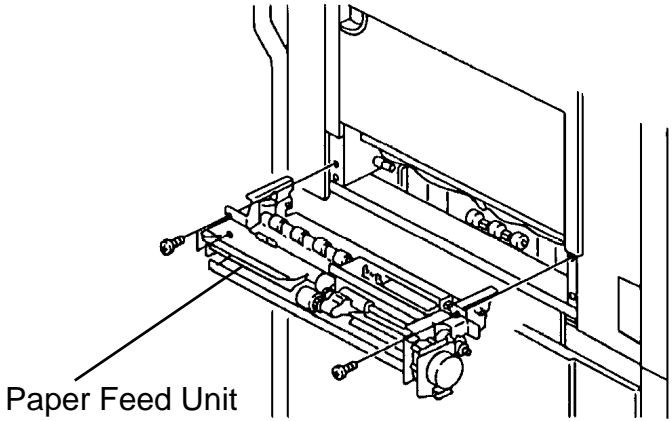
Old P/N	New P/N	Description	Q'ty Used	Inter-change-ability	Parts Catalog	
					Index No.	Page
A3802311	A3802310	Guide Plate	1 → 1	O/O	2	13

M. Iwasa, Manager
 Technical Support Department

MODEL NAME	V/Hz	DESTINATION	JAPAN PRODUCTION		REI PRODUCTION	
			CODE	SERIAL NUMBER	CODE	SERIAL NUMBER
NRG CLCT55	120/60	U.S.A. , Canada etc.	A380 - 10		A380 - 10	
Savin LCT3.5K	120/60	U.S.A.	A380 - 15		A380 - 15	
Ricoh RT31	120/60	U.S.A.	A380 - 17		A380 - 17	
NRG CLCT55	230/50	Europe etc.	A380 - 22		A380 - 22	
Infotec LCT5	230/50	Europe	A380 - 26		A380 - 26	
Ricoh RT31	230/50	Europe, Asia etc.	A380 - 27		A380 - 27	

Model	LCT for F400 / 410 / 420	Volt/Hz	Date of Modification	Serial Number
Modified Article	Paper Feed Unit			
Reason for Modification	Per field request			

New P/N	Description	Q'ty Used	Parts Catalog	
			Index No.	Page
A3800200	Paper Feed Unit	0 → 1	*	7



M. Iwasa, Manager
Technical Support Department

MODEL NAME	V/Hz	DESTINATION	JAPAN PRODUCTION		REI PRODUCTION	
			CODE	SERIAL NUMBER	CODE	SERIAL NUMBER
NRG CLCT55	120/60	U.S.A. , Canada etc.	A380 - 10	541	A380 - 10	
Savin LCT3.5K	120/60	U.S.A.	A380 - 15	416	A380 - 15	
Ricoh RT31	120/60	U.S.A.	A380 - 17	A342	A380 - 17	
NRG CLCT55	230/50	Europe etc.	A380 - 22	536	A380 - 22	
Infotec LCT5	230/50	Europe	A380 - 26	3E2	A380 - 26	
Ricoh RT31	230/50	Europe, Asia etc.	A380 - 27	A342	A380 - 27	

Model	3.5K LCT for F400 / 410 / 420	Volt/Hz	Date of Modification	Serial Number
Modified Article	Screws etc.			
Reason for Modification	Parts Catalog Correction			

Please add the following parts to your Parts Catalog:

New P/N	Description	Parts Catalog	
		Index No.	Page
08053307	Ball Bearing - 8 x 14 x 4MM	102	13
03130040B	Philips Pan Head Screw - M3 x 4	103	13
11050310	Wire Clamp	104	13
09514016B	Philips Screw with Flat Washer - M4	105	13
07200040B	Retaining Ring - M4	106	13
07200060B	Retaining Ring - M6	107	13

M. Iwasa, Manager
 Technical Support Department

MODEL NAME	V/Hz	DESTINATION	JAPAN PRODUCTION		REI PRODUCTION	
			CODE	SERIAL NUMBER	CODE	SERIAL NUMBER
NRG CLCT55	120/60	U.S.A. , Canada etc.	A380 - 10	541	A380 - 10	
Savin LCT3.5K	120/60	U.S.A.	A380 - 15	416	A380 - 15	
Ricoh RT31	120/60	U.S.A.	A380 - 17	A342	A380 - 17	
NRG CLCT55	230/50	Europe etc.	A380 - 22	536	A380 - 22	
Infotec LCT5	230/50	Europe	A380 - 26	3E2	A380 - 26	
Ricoh RT31	230/50	Europe, Asia etc.	A380 - 27	A342	A380 - 27	

Model: 3.5K LCT for F400/410/420		Date: 31-Mar-99	No.: 12
Modified Article: Paper Feed Unit Base		Prepared by: F. Noguchi	
From: GTSS Field Information Dept			
Reason for Modification:	<input type="checkbox"/> Parts catalog correction	<input type="checkbox"/> Vendor change	<input type="checkbox"/> To meet standards ()
	<input type="checkbox"/> To facilitate assembly	<input type="checkbox"/> To improve reliability	
	<input checked="" type="checkbox"/> Part standardization	<input type="checkbox"/> Other	

Due to parts standardization, the paper feed unit base has been changed.

Old part number	New part number	Description	Qty	Int	Page	Index	Note
A3802111	A3802121	Paper Feed Unit Base	1	O/O	13	7	